



IMAGE 1 - SMOKE DETECTOR



IMAGE 2 - STROBE LIGHT



IMAGE 3 - BREAK GLASS UNIT



IMAGE 4 - SOUNDER & STROBE BEACON



IMAGE 5 - PH30 FIRE RATED CABLE

- FIRE DETECTION NOTES
FIRE DETECTION DESIGN IN ACCORDANCE WITH SANS 10139
1. SPACE CLASSIFICATION = G1 - OFFICE
 2. FLOOR AREA = 1125 m²
 3. POPULATION = 1/SEAT = 104 PEOPLE
 4. DETECTION CATEGORY = L1 SYSTEM
 5. FIRE RESISTANT CABLES =PH30 IN ACCORDANCE WITH SANS 10139
 6. AUDIBLE ALARM SOUND LEVEL = 65 DBA
 7. WIRE WAYS = 25mm PVC THROUGHOUT C/W METAL SADDLES EVERY 500mm
 8. THE FIRE DETECTION SYSTEM MUST BE INTERFACED WITH THE FOLLOWING
 - DUCTED A/C SYSTEM TO SHUT DOWN
 - FRESH AIR SYSTEM TO SHUT DOWN
 - SMOKE VENTILATION SYSTEM TO START
 - ACCESS CONTROLLED DOORS TO RELEASE
 - LIFT TO HOME UNDER A FIRE CONDITION

- SCOPE OF WORK
1. SUPPLY AND INSTALL NEW DETECTION AND EVACUATION EQUIPMENT AS INDICATED.
 - 46-OFF NEW SMOKE DETECTORS
 - 2-OFF NEW HEAT DETECTORS
 - 2-OFF BREAK GLASS UNITS C/W SOUNDER AND STROBE LIGHTS
 - 3-OFF GREEN BREAK GLASS UNIT
 - 20-OFF STROBE LIGHTS WITH BUILT IN SOUNDER
 2. COMPLETE A FUNCTIONALITY TEST TO ENSURE THE SYSTEM OPERATES SATISFACTORILY UNDER A FIRE CONDITION.
 3. CONDUCT A SOUND LEVEL TEST FOR THE EVACUATION SYSTEM.
 4. TRAIN OCCUPANTS ON THE SYSTEM INSTALLATION.

FIRE DETECTION LEGENDS & COUNT			
SYMBOL	REFERENCE	DESCRIPTION	QTY.
	BG	BREAK GLASS UNIT WITH SOUNDER AND STROBE	2
	SS	STROBE LIGHT WITH BUILT-IN SOUNDER	20
	SD	SMOKE DETECTOR	46
	HD	HEAT DETECTOR	2
	BGU	GREEN BREAK GLASS UNIT	3
		PH30 FIRE RATED CABLE	1095m
		Ø25mm CONDUIT LINK	548m

REVISIONS					
No	Date	Description	Rev By	Ckd By	
A	23/08/2023	ISSUED FOR INFORMATION	S.M	H.R	

CONSULTMECH
Mechanical Engineers

09 Plantanus Street
Kuilsvier
7580

Cell.: (072) 948 4470
Tel.: (021) 903 1407
Email: info@consultmech.co.za

PROJECT

LAHAE LA SARS - BLOCK D

DWG TITLE

BROOKLYN

DWG NUMBER

21B09-D-604-06

REV.

A

DESIGNED BY

S. MAFUYA

SCALE

1:100 @ A1

CHECKED BY

H.D ROUX

ECSA NUMBER

201070151

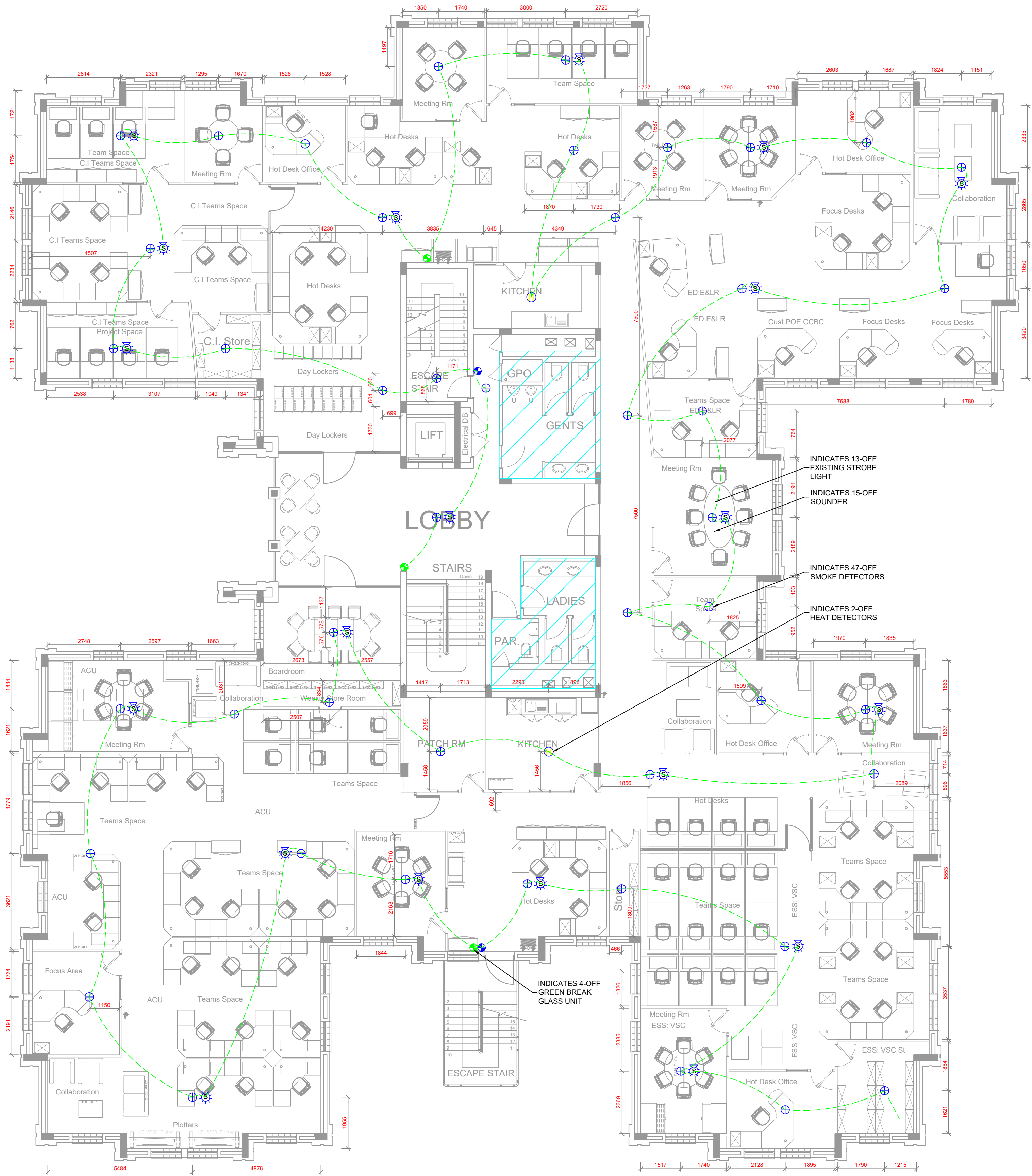
APPROVED BY

H.D ROUX

ECSA NUMBER

201070151

COPYRIGHT AND RIGHT OF REPRODUCTION OF THIS DRAWING OR ANY PORTION THEREOF IS RESERVED BY THE ENGINEERS



SECOND STOREY - PROPOSED DETECTION LAYOUT (Scale 1:100)

ISSUE DATE:
2023-08-23

REVISION:
A

X

FOR INFORMATION

FOR APPROVAL

FOR TENDER

FOR CONSTRUCTION

AS-BUILT

Local Authority stamp

